

*30th Annual*  
**MISSISSIPPI  
RURAL HEALTH  
CONFERENCE 2025**

**November 19–21, 2025 | Flowood, MS**

MISSISSIPPI  
**RURAL HEALTH**  
ASSOCIATION





# Agenda

**Wednesday, November 19th, 2025**

## Pre-Conference Workshop: RHC Policy & Procedure Manual Update



**10:00 AM–3:00 PM**

### RHC Policy & Procedure Manual Update

*Speaker: Joanie Perkins, CPC, CHCM*

This pre-conference workshop, led by Joanie Perkins, will provide attendees with a comprehensive update on Rural Health Clinic (RHC) policy and procedure manual requirements. Participants will review recent federal and state regulatory changes affecting clinical operations, compliance, and documentation. The session will also cover best practices for updating internal manuals to reflect changes in staffing models, billing practices, and emergency preparedness. Attendees will leave with practical tools and templates to streamline their policy reviews and enhance survey readiness.

## Golf Tournament



**8:00 AM–1:00 PM**

### Rural Health Golf Tournament

Tee off with colleagues for a morning of fresh air, friendly competition, and fairway fun at the Rural Health Golf Tournament! Whether you're swinging for par or just here for the laughs, it's the perfect way to network before the conference begins.

**Thursday, November 20th, 2025**

## Mississippi Maternal and Child Health Conference



**7:30 AM**

### Check-in and Networking Breakfast

**8:30 AM**

### Promoting Maternal Mental Health & Resilience

*Speaker: Hannah Sheridan, MA, BSN, RN and Calandrea Taylor (Cali), LPC-S*

This session will address strategies for identifying and supporting mothers experiencing perinatal depression and anxiety. This session will explore clinical screening tools, stigma-reduction initiatives, and community-based approaches to building resilience. Attendees will gain actionable insights on integrating mental health supports into maternal health systems.

**9:30 AM**

### Prenatal to Postpartum Telehealth & Telemonitoring

*Speakers: Tearsanee Davis, DNP, FNP-BC, PMHNP-BC, FAANP and Tiffany Regan, BSN, RN*

Dr. Tearsanee Davis and Tiffany Regan will present innovative telehealth applications that improve access to prenatal and postpartum care. Participants will learn how remote monitoring, digital health platforms, and patient navigation are reshaping outcomes in rural areas. Case studies from Mississippi will illustrate best practices in scaling virtual maternity care.

**10:30 AM**

### Break



**11:00 AM**

## **Panel Discussion: Child Health in Early Years: Hearing, Nutrition & Screenings**

*Speakers: Mary Frances Johnson, Au.D., CCC-A, Sylvia J. Wingo, MD, FAAP, and Margaret Swearingen, MA, RD/LD*

This panel will feature a pediatrician, an audiologist and a nutritionist who will examine early childhood interventions. Topics include newborn hearing screenings, addressing malnutrition, and developmental assessments critical to long-term health. The session will focus on aligning local practices with state-level goals for child health equity.

**Noon**

## **Adjourn Maternal and Child Health Conference**

# **Main Conference Day 1**



**Noon**

## **Awards Banquet and Annual Meeting**

This opening banquet will feature rural health awards presented to deserving individuals and entities in the State of Mississippi. It will also include the annual membership meeting and recognitions.

**1:30 PM**

## **Break**

**1:45 PM**

## **National Rural Health Update**

*Speaker: Alan Morgan, MPA*

Alan Morgan, CEO of the National Rural Health Association, will provide a comprehensive overview of current trends in national rural health policy. He will cover funding updates, strategic initiatives, and advocacy priorities at the federal level. This session is critical for understanding how national decisions will impact Mississippi's rural communities.

**2:45 PM**

## **Update on the Mississippi Rural Health Transformation Fund**

*Speaker: Ryan Kelly*

This presentation provides an overview and current update on the Mississippi Rural Health Transformation Fund, a key initiative designed to strengthen and sustain rural hospitals and healthcare delivery systems across the state. It will outline recent actions by state leadership, anticipated CMS responses, and the implementation timeline for participating facilities. Attendees will gain insight into how these transformation efforts aim to improve access, financial stability, and long-term viability of rural healthcare in Mississippi.

**3:30 PM**

## **Legislative Panel Discussion**

*Panelists: Sen. Kevin Blackwell and Rep. Sam Creekmore*

This panel will bring together key state legislators focusing on upcoming rural health bills, funding mechanisms, and policy innovations. Attendees will have the opportunity to hear directly from lawmakers about what's ahead for 2026.

**5:00 PM**

## **Mississippi Rural Health Day Reception**

This reception will celebrate the amazing success of rural health in Mississippi as well as provide an opportunity for members to network with one another and visit with vendors. In addition, it is an opportunity for members to judge the Mississippi Rural Physician Scholars posters.



**Friday, November 21st, 2025**

## **Main Conference Day 2**

**7:30 AM**      **Check-in and Networking Breakfast**

**8:30 AM**      **Rural Hospital Panel Discussion**

*Speakers: Chad Netterville, Greg Gibbes, Jerry Kever, and Chris Threadgill*

Four hospital leaders will share their experiences navigating workforce shortages, financial pressures, and service expansion. This interactive discussion will provide real-world strategies for sustaining rural hospitals. Panelists will also address recent innovations inpatient care and community partnerships.

**9:30 AM**      **Rural Health Clinic Panel Discussion**

*Speakers: Selena Gurley, MSN, FNP-C, CRHCP, Allison Henrichs, FNP*

This panel will discuss operational and regulatory challenges for rural health clinics. Topics will include reimbursement trends, staffing strategies, and care coordination. Attendees will gain practical insights into enhancing rural clinic sustainability.

**10:30 AM**      **Break**

**11:00 AM**      **Hot Topic Closing Keynote: The Use of AI in Rural Healthcare Settings**

*Speaker: Kollin R. Napier, Ph.D.*

In this compelling keynote, Kollin Napier will explore how artificial intelligence is transforming rural healthcare delivery through predictive analytics, diagnostic tools, and operational efficiency. Attendees will gain insight into real-world applications and future potential of AI technologies to bridge care gaps in underserved areas

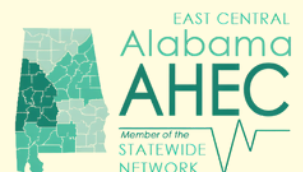
**Noon**      **Rural Health Conference Adjourns**

## **Continuing Education Information**

The Alabama Statewide Area Health Education Centers (AHEC) Program works to strengthen the healthcare workforce across Alabama by supporting students and professionals in rural and underserved communities. Through education, training, and community engagement, AHEC helps connect future health professionals with meaningful experiences that prepare them for service in high-need areas. We are proud to support the 30th Annual Mississippi Rural Health Conference and will be awarding Continuing Education Units (CEUs) to eligible participants as part of our commitment to advancing rural health initiatives and professional development.

AL Statewide AHEC Program is an approved provider of continuing hours for nurses by the AL Board of Nursing (Provider ABNP1584 Expiration Date 6/14/2028) and has awarded the below session the following contact hours for the Alabama Rural Health Association Conference November 19-20, 2025

- RHC Policy & Procedure Manual Update, 6.0 Contact Hour
- Promoting Maternal Mental Health & Resilience, 1.0 Contact Hour
- Prenatal to Postpartum Telehealth & Telemonitoring, 1.0 Contact Hour
- Panel Discussion: Child Health in Early Years: Hearing, Nutrition & Screenings, 1.0 Contact Hour
- Rural Health Clinic Panel Discussion, 1.0 Contact Hour
- The Use of AI in Rural Healthcare Settings, 1.0 Contact Hour





# Speakers

## Joanie Perkins, CPC, CHCM

CCO - North Sunflower Medical Center



Joanie has worked in health care management for the past 40 years. Her focus for the past 24 years has been on Rural Health, specializing in Rural Health Clinics and Critical Access Hospitals. In 1987 she formed J.P. Consulting, Inc. and specialized in out-patient billing and RHC conversions. As the need for rural consulting grew, Joanie picked her favorite topics and focused working with Critical Access Hospitals and RHC's nationwide. Joanie is an Executive Board Member for the National Rural Health Association and a member of NRHA's Rural Primary issues group committee. She is the past chair of the national RHC constituency group, a member of the Mississippi Rural Health Association, along with her regional MAC Provider Outreach and Education Advisory Committee. Currently she is serving on the Mississippi Hospital Association's Health Equity Committee, and the Myriad Health Alliance compliance committee. Joanie is the Chief Compliance Officer at a Critical Access Hospital in the heart of the Mississippi Delta, owns a home there, and is involved with the economic development of that area. She loves the small town life, and plans on spending her retirement working on healthcare in the rural United States.

## Hannah Sheridan, MA, BSN, RN

Mississippi Public Health Institute



Hannah Sheridan, MA, BSN, RN is a maternal and child health program manager with the Mississippi Public Health Institute. Hannah earned her Bachelor of Science in Nursing from Mississippi College and her Master of Arts in Health Studies from the University of Alabama. Hannah brings both clinical expertise and public health insight to her work. She is especially passionate about caring for mothers during the postpartum period and advancing programs that support families through every stage of the maternal health journey.

## Calandrea Taylor (Cali), LPC-S

Child Access to Mental Health and Psychiatry for Moms



Calandrea is a Licensed Professional Counselor-Supervisor and the Program Director for the Child Access to Mental Health and Psychiatry for Moms (CHAMP for MOMS). This is a program operating out of UMMC that blends support to screen and treat maternal mental health and maternal substance use. Prior to working in this role Calandrea worked in various roles and settings as a clinical therapist, counselor, and manager to provide and direct mental health services. Populations worked with includes adults, adolescents and children, from various cultural backgrounds around the Jackson-metro area and surrounding cities.

Calandrea has expertise working at all levels of care include partial hospitalization, intensive outpatient, acute care, community mental health and private practice. She holds a bachelor's degree in Psychology from Alcorn State University and a master's degree in Clinical Mental Health Counseling from Mississippi College.

## Tiffany Regan, BSN, RN

Care Coordinator - University of Mississippi Medical Center's Center for Telehealth



Tiffany Regan, BSN, RN, serves as a Care Coordinator with the University of Mississippi Medical Center's Center for Telehealth. In her role, she supports Mississippi mothers through remote patient monitoring, providing education, health tracking, and compassionate support throughout pregnancy and postpartum. Dedicated to improving maternal health outcomes, Tiffany helps bridge the gap between technology and personal connection, ensuring every patient feels heard and supported.



# Tearsanee Davis, DNP, FNP-BC, PMHNP-BC, FAANP

Director - Child Health and Development Project: Mississippi Thrive!, UMMC

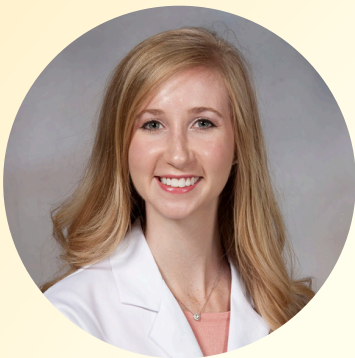


Dr. Tearsanee Davis is the Director of Clinical and Advanced Practice Operations for the Center for Telehealth at the University of Mississippi Medical Center in Jackson, Mississippi. She is responsible for all day to day telehealth clinical operations at the Medical Center. These telehealth services include Remote Patient Monitoring (RPM) for chronic disease management, TeleMental health, Corporate Telehealth, Specialty Telehealth, and Store and Forward services. In addition to representing the Center for Telehealth at various professional organizational meetings and committees and serving as principal investigator for numerous telehealth research projects, she is considered a thought leader for Telehealth in the rural community. She is a member of numerous professional organizations and participates in committees that promote the profession of nursing and bring attention to improving access to care for all. Dr. Davis received her Doctorate of Nursing Practice (DNP) from the University of Alabama at Birmingham, Master's degree (MSN) with a focus in Family Nurse Practitioner from Alcorn State University, and Bachelor of Science degree in Nursing (BSN) from the University of Southern Mississippi.

---

## Mary Frances Johnson, Au.D., CCC-A

Clinical Audiologist - UMMC



Dr. Mary Frances Johnson is an Associate Professor and Clinical Audiologist at the University of Mississippi Medical Center. Her clinical interests include hearing aids and hearing protection devices. Dr. Johnson currently serves as VP: Audiology for the Mississippi Speech-Language-Hearing Association and volunteers as Clinical Director of Healthy Hearing for Special Olympics Mississippi.

---

## Sylvia J. Wingo, MD, FAAP

General & Adolescent Pediatrician - Children's International Pediatrics, Morton Clinic



Dr. Wingo was born and raised in Natchez, MS. She later received a BS in Chemistry and Biology from Oklahoma Baptist University. She graduated from the University of Oklahoma College of Medicine in Tulsa in 1990, later completing a pediatric residency there in 1993. After eight years of practicing general pediatrics in Stillwater, Oklahoma, she shifted her focus and served as a medical missionary in South America for more than a decade, working with communities in Bolivia and Brazil. Since returning to the US, she has spent almost 2 years working at an FQHC, and 9 years working at Children's International Medical Clinic RHC in Morton, MS. Outside the office she enjoys spending time with family, indulging in amateur photography, and making popcorn on the stove to share with loved ones. Dr. Wingo is known for her compassion, cross-cultural medical experience, and dedication to helping children thrive.

---

## Margaret Swearingen, MA, RD/LD

Manager of Clinical Nutrition at Children's of Mississippi



Margaret Swearingen, MA, RD/LD, CNSC serves as the Clinical Nutrition Manager at Children's of Mississippi, where she leads pediatric clinical nutrition operations including the human milk & formula lab. With over a decade of experience in clinical and transplant nutrition, she brings deep expertise in neonatal protocols, human milk lab operations, and interdisciplinary care strategy. She is a passionate advocate for evidence-based practice and patient-centered care, and is committed to advancing innovation and outcomes in medical nutrition therapy.





## Alan Morgan, MPA

CEO of the National Rural Health Association (NRHA)

Alan Morgan, MPA, is the Chief Executive Officer of the National Rural Health Association (NRHA), bringing over 30 years of experience in state and federal health policy. He joined NRHA in 2001 and has been a leading advocate for rural health systems, payment models, and policy reform. Morgan holds a bachelor's degree in journalism from the University of Kansas and a master's degree in public administration from George Mason University. Throughout his career, he has held positions in Congress and as a health-care lobbyist, and he has been recognized by Modern Healthcare as one of the "Top 100 Most Influential People in Health Care."

---



## Ryan Kelly, MS

Executive Director - Mississippi Rural Health Association

Ryan Kelly serves as Executive Director of the Mississippi Rural Health Association (MRHA), where he oversees all association activities and provides leadership in advancing rural health across the state. In addition to his work with MRHA, he serves as executive director of the Alabama Rural Health Association and as an administrator for the Rural Health Associations of Arkansas and Arizona. Kelly brings extensive executive leadership experience, including roles as Director of External Relations at The University of Southern Mississippi, College of Health, and Chief Advancement Officer at William Carey University. He holds a Bachelor of Science from The University of Southern Mississippi and a Master of Science from Mississippi College. Actively engaged in more than twenty statewide and national health committees and coalitions—including two with the National Rural Health Association—Kelly is recognized as a go-to leader in healthcare throughout multiple southeastern states.

---



## Kevin Blackwell

Mississippi State Senator, District 19

Kevin Blackwell is a Republican member of the Mississippi State Senate representing District 19 since January 2016. He serves as Chairman of the Senate Medicaid Committee and holds membership on key committees including Appropriations, Business & Financial Institutions, Elections, Public Health & Welfare, and Highways & Transportation. Before his legislative service, he was active in local leadership as a two-term chairman of the DeSoto County Republican Party and held presidencies of the Southaven and Olive Branch Chambers of Commerce.

---



## Sam Creekmore IV

Mississippi State Representative, District 14

Sam Creekmore IV is a Republican member of the Mississippi House of Representatives serving District 14 since January 2020. He was born in Starkville, Mississippi, and holds a degree from Mississippi State University. As of the 2025–26 session, he serves as Chairman of the House Public Health & Human Services Committee and participates on several other key legislative committees.





## Chad Netterville

Executive Director - Mississippi Rural Hospital Alliance

Chad Netterville serves as Executive Director of the Mississippi Rural Hospital Alliance and Director of the Center for Rural Health at the Mississippi Hospital Association. He holds an MBA in Business & Health Administration from the University of Louisiana at Lafayette and has a background in accounting from Louisiana State University. Prior to his current role, he served as CEO of Field Health System.

---



## Gregg Gibbs

President & CEO - South Central Regional Medical Center

Gregg Gibbs serves as President and CEO of South Central Regional Medical Center (SCRMC) in Laurel, Mississippi. In this capacity, he leads the facility's strategic direction, operational performance, and community-health partnerships, including newly-formed collaborations with several regional rural hospitals. In addition to his leadership at SCRMC, Gibbs continues to provide executive oversight to a network of affiliated hospitals: Magee General Hospital (Magee), Simpson General Hospital (Mendenhall), and Covington County Hospital (Collins), under a strategic administrative services agreement that enables each facility to maintain operational independence while benefiting from shared leadership, resources and collaborative infrastructure. Gibbs brings extensive experience in hospital leadership and healthcare administration.

---



## Jerry Keever, MBA, FACHE, LNHA, NREMT

CEO & Administrator - Sharkey-Issaquena Community Hospital & Nursing Home

Jerry Keever, MBA, FACHE, LNHA, NREMT, is CEO and Administrator of Sharkey-Issaquena Community Hospital & Nursing Home in Mississippi. He oversees the hospital, nursing home, wellness programs, and ambulance services and has served in this role since 2002.

---



## Chris Threadgill

CEO & Administrator - Baptist Memorial Hospital-Calhoun

Chris Threadgill is CEO and Administrator of Baptist Memorial Hospital-Calhoun and its associated nursing home. He previously worked as Radiology Administrator and Quality Management & Risk Coordinator at Baptist Attala. Threadgill holds a B.S. in Radiologic Science, an M.S. in Radiology Administration, and a Doctorate in Healthcare Administration from the University of Mississippi Medical Center.

---



## Kollin R. Napier, Ph.D.

Mississippi Artificial Intelligence Network at MGCCC

Dr. Kollin Napier is the Director of the Mississippi Artificial Intelligence Network (MAIN), the nation's first and only statewide AI initiative, at Mississippi Gulf Coast Community College (MGCCC). Recognized as the 2024 Mississippian of the Year, he leads efforts to transform Mississippi's workforce through AI integration in education and industry. A computer scientist with a Ph.D. in machine learning and AI, Dr. Napier is an accomplished software architect and researcher whose work focuses on vulnerability detection, model optimization, and practical AI applications. He is passionate about advancing innovation, workforce development, and preparing the next generation of AI professionals.





## Selena Gurley, MSN, FNP-C, CRHCP

Vice President of Accreditation - Fast Pace Health

Selena Gurley is an accomplished family nurse practitioner and healthcare quality leader whose career has progressed from direct clinical practice to senior executive roles. She currently serves as Vice President of Accreditation at Fast Pace Health, where she leads efforts to ensure high standards of patient care, safety, and regulatory compliance across multiple facilities. With a foundation built on frontline nursing and advanced practice, Selena brings deep insights into rural health operations, accreditation strategy, and organizational culture improvement, making her a trusted partner for healthcare providers looking to elevate their performance.



## Allison Henrichs, FNP

Regional Director - North Mississippi Medical Clinic, Inc.

Allison Henrichs is a dedicated family nurse practitioner and healthcare operations leader with over 15 years of experience delivering patient-centred care across both urban and rural settings in Mississippi. She currently serves as Regional Director at North Mississippi Medical Clinic, Inc. where she oversees clinical practice excellence, care-team development, and service expansion in under-served communities. Leveraging a strong foundation in direct practice and advanced nursing, Allison brings a thoughtful blend of hands-on patient care, strategic growth planning, and a passion for improving access and outcomes for rural Mississippi populations.



# MISSISSIPPI Rural Health Day

Mississippi is among the most rural states in the nation. To celebrate quality healthcare delivered through Mississippi's rural hospitals and rural health clinics, Governor Phil Bryant signed a proclamation in 2015 declaring November 20th of each year to be Mississippi Rural Health Day.

Access to preventative and emergency care is essential to those in rural areas. The Mississippi Rural Health Association expresses its gratitude to all rural hospitals, rural clinics, FQHCs, and individuals who contribute to the success of rural healthcare. This November 20th, thank a rural health hero! Happy Mississippi Rural Health Day!





# *Sponsors*

## Diamond



MISSISSIPPI STATE DEPARTMENT OF HEALTH

---

## Platinum



## Gold



ABOUT YOU IN HOME CARE

---

HOME IS WHERE THE HEART IS.



## Silver



## Bronze



## In-Person Exhibitors





# National Rural Health Day

Celebrating the **Power of Rural!**®



THURSDAY, NOVEMBER 20, 2025



## Thank you!

Another fantastic year  
for rural health...

We extend our deepest gratitude to all of our sponsors who generously supported this year's Mississippi Rural Health Conference. We also want to thank each and every attendee for their enthusiastic participation in this event. Without your support and involvement, this successful conference would not have been possible.



MISSISSIPPI  
RURAL HEALTH  
ASSOCIATION



## Stay connected!

Follow the MRHA on  
social media!



Mississippi Rural Health Association



@MSRuralHealthAssociation



Mississippi Rural Health Association



@MississippiRHA



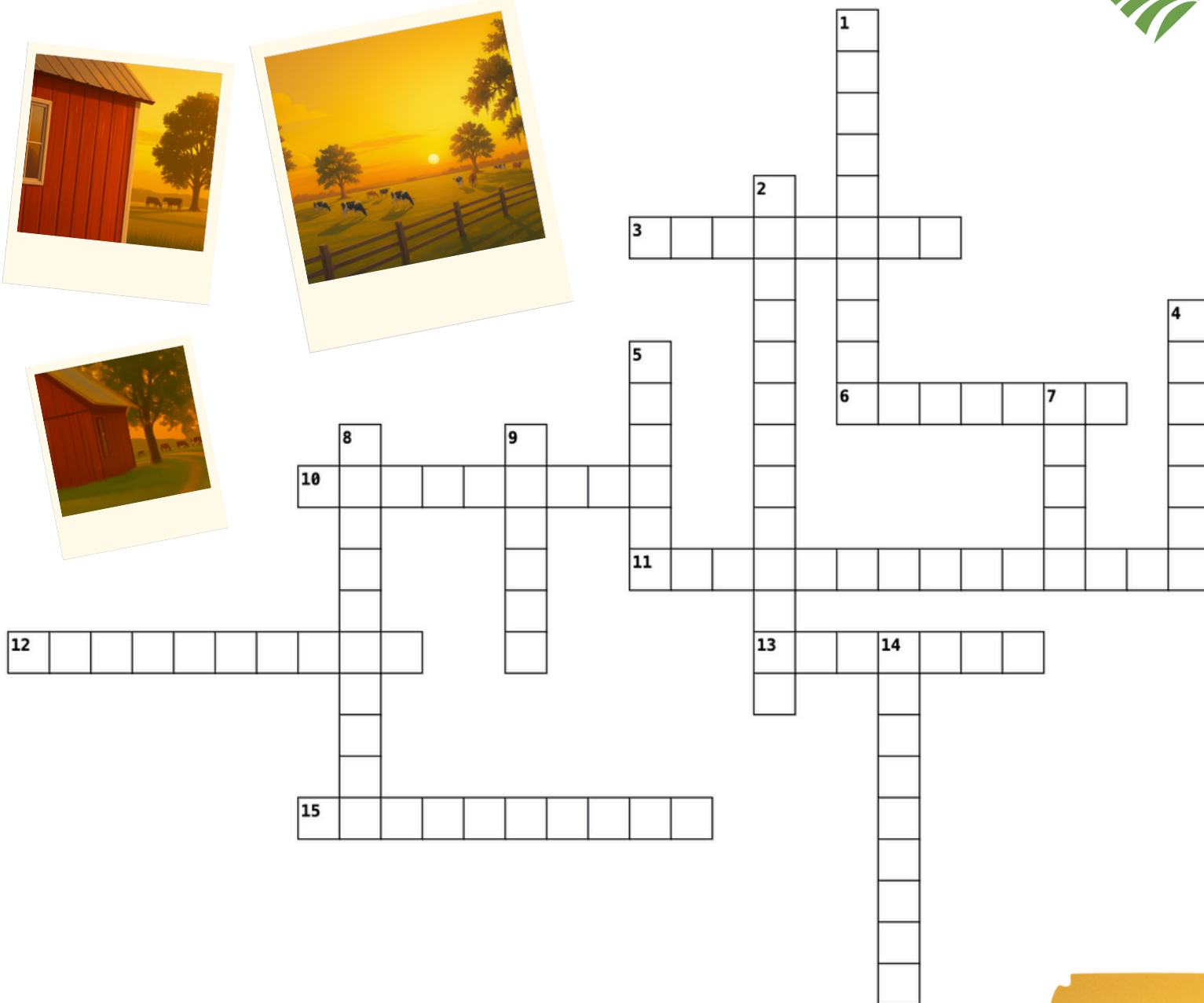
Please share any photos taken with #MSRuralHealth2025



# Rural Health Crossword 2025

Health terms, rural solutions, and conference essentials!

MISSISSIPPI  
RURAL HEALTH  
ASSOCIATION



## Across

3. The act of supporting or recommending a cause or policy to improve health outcomes.
6. A group or system of interconnected health providers or facilities.
10. The collective staff and professionals (clinical, administrative) in the health system.
11. The ability to maintain health services and operations over the long term in rural settings.
12. The act or ability to guide, influence or direct health organizations and teams.
13. The result of a healthcare intervention (clinical, patient-satisfaction, quality).
15. The delivery of health care services remotely via telecommunications technologies.

## Down

1. The introduction of new methods, ideas or tools to improve rural health service delivery.
2. Working jointly with others (e.g., clinics, hospitals, policymakers) to improve health.
4. The degree to which health services increase the likelihood of desired health outcomes.
5. The ability of patients to reach health care services when needed.
7. Pertaining to non-urban or countryside communities, often the focus of this conference.
8. Adherence to laws, regulations and standards in healthcare operations.
9. A course or principle of action adopted by an organization or government to guide health decisions.
14. A continuous sequence or progression of care from prevention through treatment and follow-up.



1. Innovation  
2. Collaboration  
3. Advocacy  
4. Quality  
5. Access  
6. Network  
7. Rural  
8. Compliance  
9. Policy  
10. Workforce  
11. Sustainability  
12. Leadership  
13. Outcome  
14. Continuum  
15. Telehealth

This image shows a single sheet of white paper with horizontal ruling lines. The lines are evenly spaced and run across the width of the page. There are no margins, text, or other markings on the paper.



This image shows a full page of white paper with horizontal blue or grey ruling lines. The lines are evenly spaced and run across the width of the page, leaving small margins at the top and bottom. There are no vertical margin lines, text, or other markings on the page.

MISSISSIPPI  
**RURAL HEALTH**  
ASSOCIATION



**#MSRuralHealth2025**