



UnitedHealthcare

MS CAN

PRIMARY CARE

PROVIDER PROFILE

UnitedHealthcare Community Plan of Mississippi

CURRENT DATE: Thursday, October 13, 2016

PROVIDER NUMBER: All Providers

SITE NUMBER: All Sites

SPECIALTY: All Specialties

## Utilization Management Provider Profile

MEMBERS AS OF: 06/30/2016

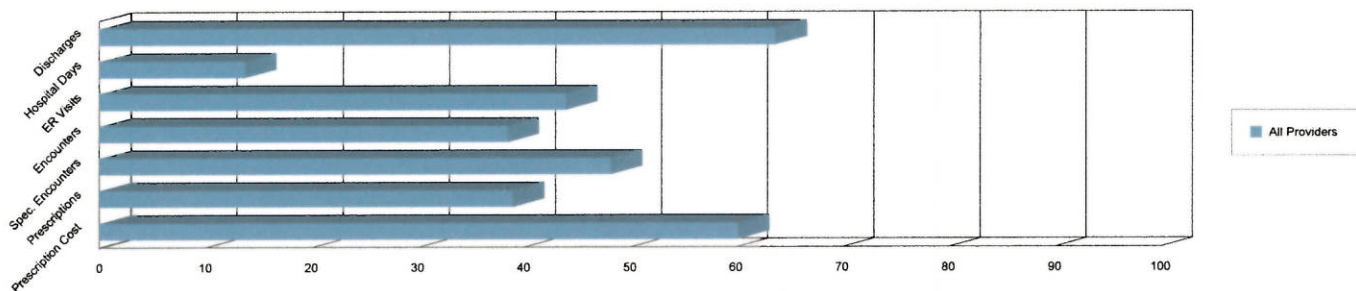
MEMBER COUNT: 529

REPORTING PERIOD: 07/01/2015 - 06/30/2016

MEMBER MONTHS: 3,421

Measure	Total Medicare	Total Medicaid	Total Dual Eligible	Total Utilization	Indicator	Provider Rate	Plan Rate	Percentile Ranking
Discharges	0	43	0	43	Discharges pmpy	0.15	0.06	63.69
Hospital Days	0	154	0	154	Hosp. Days pmpy	0.54	0.24	13.69
ER Visits	0	391	0	391	ER Visits PMPY	1.37	1.14	43.96
Encounters	0	1,597	0	1,597	Encounter PMPY	5.60	4.80	38.45
Spec. Encounters	0	445	0	445	Spec. Enc. PMPY	1.56	1.30	48.19
Prescriptions	0	4,905	0	4,905	Prescript. PMPY	17.21	13.22	38.97
Prescription Cost	0	431,324	0	431,324	Cost/Prescription	87.94	87.50	60.19
Overall UM:								44.78

PCP Ranking by Measure



## Quality Management Provider Profile

MEMBERS AS OF: 12/31/2016

MEMBER COUNT: 505

REPORTING PERIOD: 01/01/2016 - 12/31/2016

MEMBER MONTHS: 4,542

Measure	Total Medicare	Total Medicaid	Total Dual Eligible	Eligible Members	Expected Events	Actual Events	HEDIS Provider Rate	HEDIS Plan Rate	HEDIS Expected Rate	Variance from Expected
ADHD Medication - Continuation	0	0	0	0	0	0	0.00%	67.69%	49.51%	
ADHD Medication - Initiation	0	2	0	2	2	2	100.00%	57.37%	41.09%	100.00%
Adolescent Well Care Visits	0	58	0	58	58	18	31.03%	27.74%	29.98%	3.50%
Adult BMI Assessment	0	64	0	64	64	6	9.38%	18.92%	71.81%	-86.94%
AMM - Effective Acute Phase Treatment	0	6	0	6	6	1	16.67%	40.21%	54.46%	-69.39%
AMM - Effective Continuation Phase Treatment	0	6	0	6	6	1	16.67%	23.55%	37.48%	-55.52%
Annual Monitoring for People on ACE or ARBs	0	9	0	9	9	6	66.67%	79.95%	96.02%	-30.57%
Avoidance of Acute Bronchitis Antibiotic Treatment	0	1	0	1	1	0	0.00%	64.85%	22.14%	-100.00%
Child Access - All ages 25 mo to 19 yrs	0	122	0	122	122	111	90.98%	84.14%	98.56%	-7.69%

A medical director may be contacting you to discuss the results of this profile. An explanatory sheet is attached for your convenience.



**MS CAN**

**PRIMARY CARE  
PROVIDER PROFILE**

**UnitedHealthcare Community Plan of Mississippi**

Childhood Imms Combo 2	0	22	0	22	330	286	54.55%	63.07%	90.13%	-39.48%
Chlamydia Screening in Women	0	10	0	10	10	3	30.00%	44.75%	68.00%	-55.88%
Completed Mammograms	0	16	0	16	16	6	37.50%	47.35%	51.25%	-26.83%
Completed Pap Smears	0	75	0	75	75	34	45.33%	54.21%	56.05%	-19.13%
Controlling High Blood Pressure	0	29	0	29	29	0	0.00%	0.00%	46.24%	-100.00%
Counseling for Nutrition	0	78	0	78	78	4	5.13%	7.67%	43.29%	-88.15%
Counseling for Physical Activity	0	78	0	78	78	0	0.00%	2.72%	34.25%	-100.00%
Custom EPSDT	0	146	0	146	146	83	56.85%	75.13%	85.00%	-33.12%
Diabetes Care HbA1c <8	0	17	0	17	17	0	0.00%	5.02%	38.80%	-100.00%
Diabetes Eye Exam	0	17	0	17	17	8	47.06%	40.38%	66.29%	-29.01%
Diabetes HgbA1c Poor Control	0	17	0	17	17	17	100.00%	93.85%	55.01%	100.00%
Diabetes HgbA1c Screening	0	17	0	17	17	12	70.59%	76.77%	81.10%	-12.96%
Diabetes Nephrophapthy	0	17	0	17	17	14	82.35%	86.19%	90.33%	-8.83%
FUH 30-Day Follow-Up	0	6	0	6	6	5	83.33%	66.78%	42.30%	97.00%
FUH 7-Day Follow-Up	0	6	0	6	6	4	66.67%	49.94%	64.43%	3.48%
Imaging Studies for Low Back Pain	0	2	0	2	2	1	50.00%	29.75%	75.32%	-33.62%
Immunizations for Adolescents - Combo1	0	6	0	6	6	3	50.00%	41.54%	40.15%	24.53%
Lead Screening	0	22	0	22	22	16	72.73%	66.14%	64.00%	13.64%
Medication Management for People With Asthma - 50%	0	1	0	1	1	0	0.00%	34.11%	40.96%	-100.00%
Medication Management for People With Asthma - 75%	0	1	0	1	1	0	0.00%	6.71%	30.16%	-100.00%
PCE-Bronchodilator	0	0	0	0	0	0	0.00%	69.70%	83.18%	
PCE-Systemic Corticosteroid	0	0	0	0	0	0	0.00%	37.50%	50.29%	
Postpartum Exams	0	42	0	42	42	11	26.19%	32.59%	72.14%	-63.70%
Prenatal Care Visits	0	42	0	42	42	31	73.81%	82.09%	92.00%	-19.77%
Testing for Children with Pharyngitis	0	3	0	3	3	1	33.33%	61.13%	55.92%	-40.40%
Treatment for Children with URI	0	12	0	12	12	7	58.33%	40.42%	60.29%	-3.25%
Weight Assessment	0	78	0	78	78	1	1.28%	7.40%	33.17%	-96.14%

A medical director may be contacting you to discuss the results of this profile. An explanatory sheet is attached for your convenience.





**MS CAN**

**PRIMARY CARE**

**PROVIDER PROFILE**

**UnitedHealthcare Community Plan of Mississippi**

Well Child Visits 0 - 15 mos	0	9	0	9	54	59	109.26%	38.18%	62.86%	73.81%
Well Child Visits 3 - 6 yrs	0	33	0	33	33	21	63.64%	40.00%	48.44%	31.38%
Overall QM:									44.27%	

A medical director may be contacting you to discuss the results of this profile. An explanatory sheet is attached for your convenience.



UnitedHealthcare

MS CAN

PRIMARY CARE

PROVIDER PROFILE

UnitedHealthcare Community Plan of Mississippi

## Definitions and Descriptions of Standards

**Members As Of** - End date of the reporting period.

**Reporting Period** - UM profile is a rolling 12 month period that lags by three months. QM profile always covers a calendar year.

**Member Count** - Total number of members enrolled with the PCP at any time during the reporting period.

**Member Months** - Total number of member months of enrollment the PCP had during the reporting period.

**Provider Rate** - The PCP's measure statistic as calculated for that profile report time span.

**Risk Factor** - A calculated value determined by averaging all PCP panel-assigned member risk scores, which are derived by a CDPS grouper through claims / encounter experience and diagnoses.

**Adjusted Rate** - The Provider's Rate divided by the Provider's Risk Factor.

**Plan Rate** - The rate for that provider's specialty for that measure for that time span. It can be compared to the Provider's rate to show how that provider most closely matches to his peers within the health plan during the reporting time frame.

**Percentile Ranking** - The Provider's Rate is adjusted using the Risk Factor, then compared to other providers with the same specialty to determine a bell curve percentile ranking. In general, it is good to be >5th percentile or <95th percentile.

**Overall UM** - An average of the results of all of the percentile rankings for each PCP. PCP encounters are excluded, to be tracked separately.

**Overall QM** - An average of the Provider Rate column giving an overall average completion of the QM measures.

**PCP Ranking by Measure Chart** - A visual representation of the provider's percentile ranking as compared to others with the same specialty. Again, it is best to fall between the 5th and 95th percentile, which is <2 standard deviations from the mean.

### Utilization Management Measure Definitions

**Discharges** - Measure of the number of acute inpatient discharges.

**Hospital Days** - Measure of the associated length of stay for the discharges reported.

**ER Visits** - Measure of the number of emergency department visits.

**Encounters** - Outpatient visits to ANY primary care provider of those members assigned to the PCP. Lack of correct encounter submissions will cause major problems to the PCP, especially in the quality management area.

**Specialist Encounters** - Outpatient visits to any specialist from members assigned to the PCP.

**Prescriptions** - Prescriptions from members assigned to the PCP.

**Prescription Costs** - The cost of prescriptions from members assigned to the PCP.

### Quality Management Measure Definitions

**Variance from Expected** -  $(\text{ProviderRate}) - (\text{ExpectedRate}) / (\text{ExpectedRate}) * 100$

**ADHD Medication - Continuation** - Members aged 6-12 years who were dispensed ADHD medication, who remained on the medication for at least 210 days and who, in addition to the visit in the Initiation Phase, had at least two follow-up visits with a practitioner within 270 days after the Initiation Phase ended.

**ADHD Medication - Initiation** - Members aged 6-12 years who were dispensed ADHD medication, who had one follow-up visit with practitioner with prescribing authority during the 30-day Initiation Phase.

**Adolescent Immunization Status** - Members aged 13 years who had one dose of meningococcal vaccine and one tetanus, diphtheria toxoids and acellular pertussis vaccine (Tdap) or one tetanus, diphtheria toxoids vaccine (Td) by their 13th birthday.

**Adolescent Well Care Visits** - Members aged 12 - 21 years who had a comprehensive well care visit with a PCP or OB/GYN within the measurement year.

**Adult BMI Assessment** - Members age 18-74 years of age who had an outpatient visit and who had their body mass index (BMI) documented during the measurement year or the year prior the measurement year.

**AMM - Effective Acute Phase Treatment** - Members aged 18 and older who were diagnosed with a new episode of major depression and treated with antidepressant medication, and who remained on the medication for at least 84 days (12 weeks).

**AMM - Effective Continuation Phase Treatment** - Members aged 18 and older who were diagnosed with a new episode of major depression and treated with antidepressant medication, and who remained on the medication for at least 180 days (6 months).

**Annual Monitoring for Patients on Persistent Medications-ACE Inhibitors** - Members aged 18 years and older who received at least 180 treatment days of ACE inhibitors or ARBs.

**Avoidance of Acute Bronchitis Antibiotic Treatment** - Adults aged 18-64 years of age with a diagnosis of acute bronchitis who were not dispensed an antibiotic prescription.

**Child Access** - Members 12 months to 19 years of age that had a visit with a PCP within the measurement year.

**Child Immunization Status, Combo 2** - Members aged 2 years who had four DTaP; three IPV; one MMR; three HiB; three HepB, one VZV immunizations (unless contraindicated) by their second birthday.

**Chlamydia Screening in Women** - Female members aged 16-24 who were identified as sexually active and who had at least one test for chlamydia during the measurement year.

**Completed Mammograms** - Female members aged 50 - 74 that had a mammogram performed during the measurement year or within the year prior.

**Completed Pap Smears** - Female members aged 24 - 64 that had a pap smear performed during the measurement year or within the two years prior.

A medical director may be contacting you to discuss the results of this profile. An explanatory sheet is attached for your convenience.